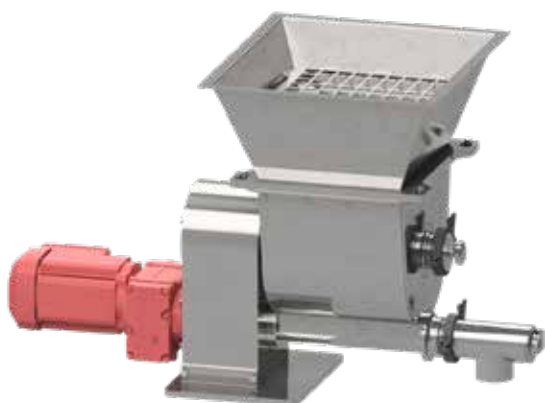




SCREW FEEDERS

IN GMP AND INDUSTRIAL DESIGN



Type SD 63-GMP



Type SD 160-Industry

PRODUCT EXAMPLES

Food:

- salts
- flavors
- nuts
- cocoa beans
- crystal sugar
- press cake

Non-Food:

- carbon black
- fertilizers
- gypsum
- plastics
- materials
- wood pellets



SCREW FEEDERS IN GMP AND INDUSTRIAL DESIGN

The JEHLICH Screw Feeders in 3 sizes are used for volumetric and gravimetric dosing of bulk solids in a broad range of material processing. The screw conveyors' properties are individually designed to meet the specific product and processing requirements. The integrated agitator is preventing the feed product from clumping and bridging for a steady and reliable screw conveyor feeding.

A gravimetric dosing with load cells is available as an option.

SCREW FEEDER SD 63-/SD 125-GMP

- For volumetric and gravimetric dosing
- In GMP conformity: simple and quick dismantling
- Material in contact with product: AISI 316 / 1.4404
- Surface finishing in $Ra \leq 0,8 \mu m$
- FDA-compliant sealing
- Geared motors for the required ATEX zone



SCREW FEEDER SD 160 INDUSTRY

- For volumetric and gravimetric dosing
- Material in contact with product: mild steel or stainless steel
- Shaft sealing with packing glands
- Level monitoring via switch or weighing system
- Motion sensor for screw conveyor and agitator
- Geared motors for the required ATEX zone
- Optional: twin screw type for two separate discharges

Type	SD 63-GMP	SD 125-GMP	SD 160 Industry
Screw Diameter	ø63 mm	ø125 mm	ø160 mm
Intermediate Storage Volume	70-100 liters	350-500 liters	1300 liters
Application	fine dosing of granules and bulk solids		fine dosing and intermediate storage of granules and bulk solids
Screw Conveyor Drive	1,1 kW	1,5 kW	3 kW
Agitator Drive	0,25 kW	0,55 kW	0,75 kW
Capacity (100 % Filling Degree)	max. 0,63 m ³ /h	max. 8,5 m ³ /h	max. 16,5 m ³ /h
Weight	approx. 100 kg	approx. 250 kg	approx. 950 kg
Discharge Diameter	DN 65	DN 125	DN 150

FULL SERVICE

Optimize the operational performance of your system with our dedicated maintenance services. We warrant short term availability of original spare parts throughout the life time of your unit.

Milling trials
& Analysis

Project planning
& Engineering

Manufacturing
& Installation

Training
& Commissioning

Maintenance
& Service